



Women Giving Back's Back to School Drive

Help us provide each school-aged child
with a full set of the supplies listed below!

New shoes

New durable

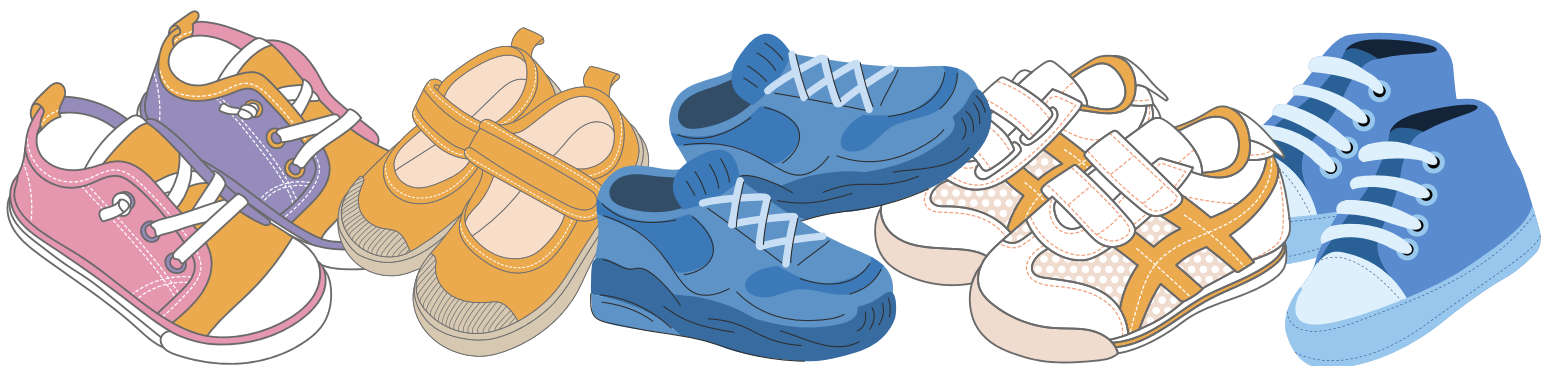
New socks

backpacks

New underwear

Drop-off times at www.WomenGivingBack.org/give-clothing

To host a drive, contact Lisa@WomenGivingBack.org



You have the power to help a child succeed!

Back to school time can be stressful for many low-income families, especially those who can't afford school supplies for their children.

♥ Consider donating to support those in need ♥

Backpack Tips

- Elementary school minimum size 6" x 12" x 16"-- should be large enough to accommodate pocket folders, notebooks, and pencil boxes (as adorable as they are, please no mini backpacks)
- Middle & high school minimum size 8" x 13" x 18" -- large sizes are in high demand!
- As a reminder, schools in our service area do not allow students to use wheeled backpacks
- Gender-neutral colors are preferable for all grade levels

Note: while we appreciate the generosity, please do not fill backpacks with school supplies- we work with wonderful sponsors to obtain specific items so packs are uniform and organized!

